



# KOUNTRY KRAFT

EXCELLENCE IN CUSTOM-MADE CABINETRY SINCE 1959

# ABOUT US



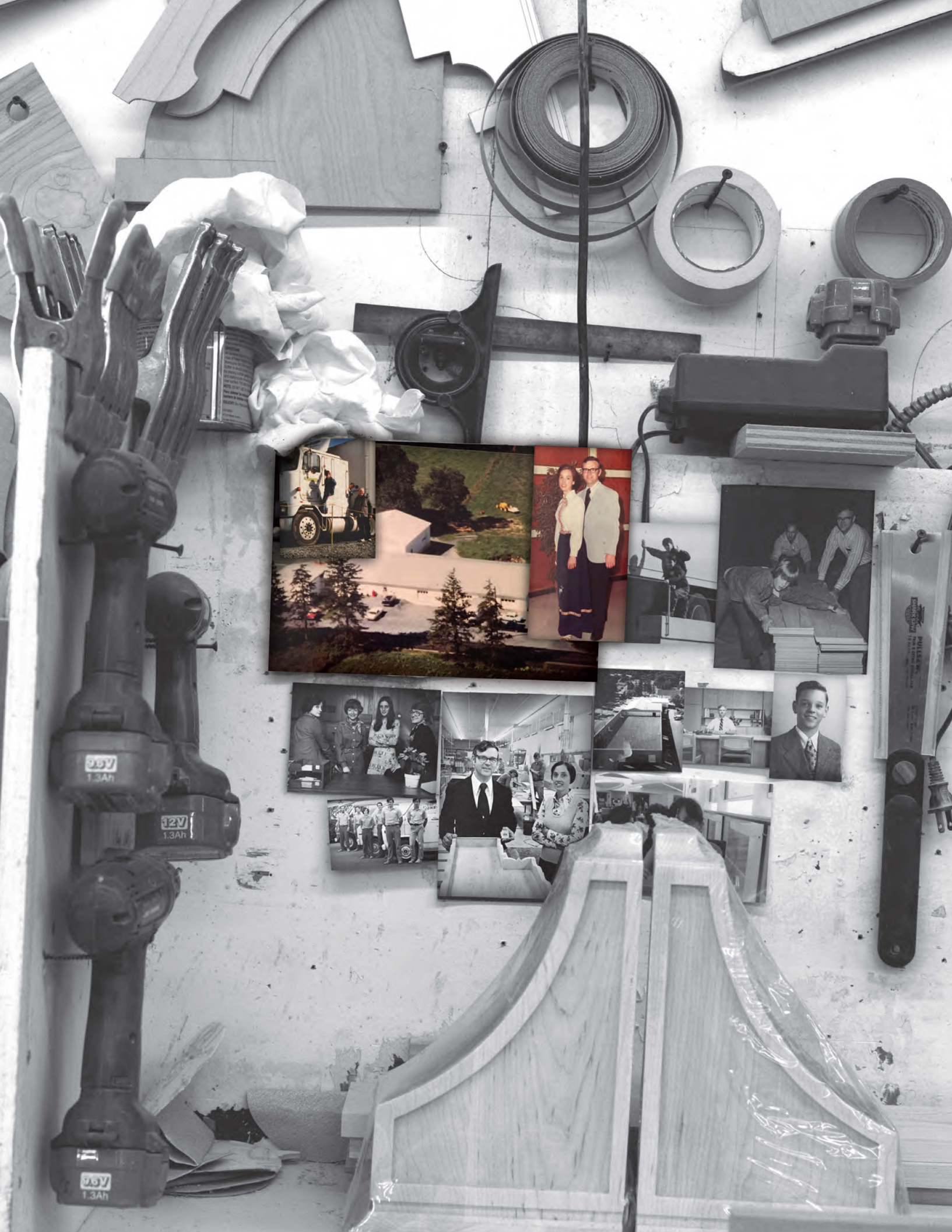
Kountry Kraft is a second generation, family-owned manufacturer of high quality hand-crafted custom cabinetry and millwork. Founded in 1959 by Elvin and Helen Hurst, Kountry Kraft has remained successful for over half a century by adhering to a strict family work ethic, impeccable quality, excellent service and honest business practices. Today, Kountry Kraft is owned and managed by the founder's children, Elvin Hurst Jr, President and Dee Hurst-Funk, Chief Financial Officer. The modern 96,000 square foot facility is located in the heart of a farming community in Newmanstown, Pennsylvania and employs more than 100 skilled craftsmen.

We are dedicated to our partnerships with kitchen and bath professionals to provide the finest products available on the market today, always an exceptional value, always on time and produced exactly to specifications. Our products come with a limited lifetime guarantee – and we stand by that commitment. At Kountry Kraft we pledge not only to craft high-quality custom cabinets, but to treat our customers respectfully and honestly.

Our dealers often tell us that one of our most valuable assets at Kountry Kraft is its people. Our company is staffed with a team of hardworking craftsmen who are skilled in the art of custom cabinetry and ready to maintain our legacy of excellent craftsmanship and service. At Kountry Kraft, we proudly produce fine cabinetry that maintains a harmonious balance between quality craftsmanship and modern technology.

*Front cover design by True North Cabinets in New Canaan, CT*











# KITCHEN

JUSTIN - TYLER SACHS

STONINGTON CABINETRY & DESIGNS



---

"The variety and versatility of Kountry Kraft's cabinetry allows Stonington to confidently design not just kitchens, but today's kitchens that need to seamlessly blend into adjacent living spaces. And by relying on Kountry Kraft's skill to perfectly match a home's existing molding and millwork, we have executed innovative, cohesive renovations that our clients love." - Justin Sachs

---









# KITCHEN

# JAMES KERSHAW

JAMES KERSHAW ASSOCIATES



---

"I have been in the kitchen business since 1963, and have worked with a lot of vendors over the years. Kountry Kraft is the very best business associate. They are always genuine, friendly, helpful and give 100% to help us in every way. They never say "no" to the designs we create, and always work with us to figure out the best way to engineer the design. The product is always precise and the finishing is excellent. They really make it a pleasure to do business." - James Kershaw, CKD

---











---

"Kountry Kraft's extensive team is very knowledgeable and always available to work through all of the details in a very professional and pleasant manner." - PKsurroundings

---







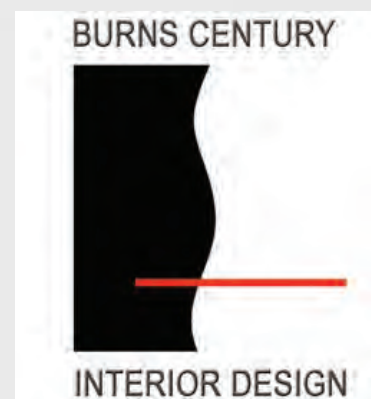




This kitchen was featured in the Atlanta Journal-Constitution HomeFinder Cover story:

"Add Pop of Color to Kitchen."

"Over the years, I have brought unique designs to them, yet every time I ask them to do something special, they exceed my expectations. Kountry Kraft is an amazing group of people who say what they are going to do and actually do it. Their deliveries are always on time and keep my projects on schedule." - Burns Century, ASID, CKD







Photography by Gregg Krantz; Design by Fisher Grey Studio



# KITCHEN

JESSICA MCALLISTER

D&B ELITE CONSTRUCTION GROUP



*Photography by Gregg Krantz; Design by Fisher Grey Studio*

"I have worked with Kountry Kraft for over 12 years. It has been a pleasure designing and being a part of manufacturing." - Jessica McAllister, ASID









# KITCHEN

# STEVE HANFORD

HANFORD CABINET & WOODWORKING



---

"We have been in business for 38 years and have been working with Kountry Kraft for almost as long. They provide the best product and service possible and stand behind their work." - Steve Hanford

---









# KITCHEN

JUSTIN - TYLER SACHS

STONINGTON CABINETRY & DESIGNS



"We launched Stonington Cabinetry & Designs nearly three years ago after spending 10 years with our family's residential construction business.

With our background, we knew we needed to partner with a cabinet manufacturer that would flawlessly produce our kitchen designs, as well as provide a proven reputation for exceptional cabinetry. Kountry Kraft has done just that, exceeding our (and our clients') high expectations repeatedly, on all of our projects.

Kountry Kraft has been an excellent partner, allowing us to focus on what we do best – designing kitchens."

- Justin Sachs











---

"Kountry Kraft provides us with high-quality custom cabinetry and millwork made to our specifications. Their customer service is impeccable and our clients are always satisfied. Kountry Kraft is a loyal partner and crafts products that are a part of our award winning designs." - True North Cabinets

---







Photography by Andrew Fields



# KITCHEN

SAMANTHA  
PETZRICK CHINN

PETZRICK CHINN DESIGNS, LLC



*Photography by Andrew Fields*

---

"Kountry Kraft can build just about anything I can draw, which lets me design with full creative freedom for each of my clients. Just as importantly, they don't nickel and dime the modifications, like many cabinet manufacturers do, which makes the entire process much more enjoyable for everyone involved. Kountry Kraft is a pleasant company to work with that stands proudly behind what they create."

- Samantha Petzrick Chinn, CKD

---









# KITCHEN

TOM KELLY

TRK DESIGN COMPANY



[www.JoelGrossPhotography.com](http://www.JoelGrossPhotography.com)

---

"Kountry Kraft does everything well.  
They're the best business partner I've ever had.  
We have the same philosophy on everything.  
We've had a blessed relationship for almost 25 years.  
They just don't fall short –  
Every time I ask them to do something  
that's different they exceed my expectations."  
- Thomas R. Kelly, CMKBD

---









# KITCHEN

SHAWN PREIS

KOUNTRY KRAFT, INC.



The modern design of this space embraces nature as an extension to the kitchen. The dark window mullions marry the outdoor space to the interior full overlay cabinetry of quarter sawn white oak with a custom stain. Architectural depth was created with the detail of the corner pilasters on the island finished with a custom paint and glaze.











---

"Looking back on our business relationship of approximately 15 years, I can't think of a project that I've done with Kountry Kraft that hasn't exceeded my expectations." - PKsurroundings

---











This collaborative kitchen design features a profusion of accessories and in-cabinet lighting, such as pull out storage units, lazy susan, pantry, pull out waste baskets, pull out spice racks, cleaning caddy, base pull outs, stainless steel lift up frame doors with soft etched glass, aluminum track with milk lens, and LED strip lighting.









# KITCHEN

JUSTIN - TYLER SACHS

STONINGTON CABINETRY & DESIGNS



---

"The visual pop of this brick backsplash is a perfect complement to the beaded inset cabinetry finished in Alpine White. Kountry Kraft was integral to creating this kitchen -- they were able to source materials and custom build the extra thick, wood-stained shelves featured inside the glass-paneled cabinets of the island, as well as for the exposed shelving in the corner of the kitchen. Their eagerness to bring our designs to life has made them a true partner in our business." - Justin Sachs

---









# KITCHEN

# TR BUILDING & REMODELING



---

"Kountry Kraft's customer service is excellent.  
They have great responsiveness, their product  
is great, and they stand behind it.  
We send all of our business their way."  
- TR Building & Remodeling

---









# KITCHEN

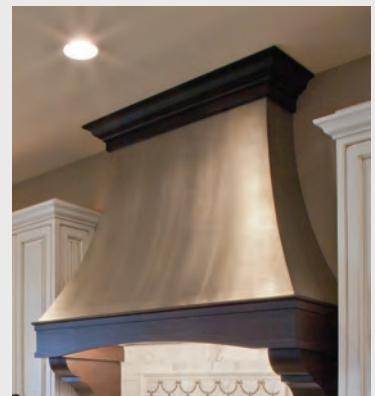
# KOUNTRY KRAFT



---

This spacious kitchen feels warm and inviting with the addition of contrasting cabinetry and wood floors. The smooth Metal Fusion range hood by Kountry Kraft compliments the distressed cabinetry and pendant lighting. Dual islands create a large workspace and additional seating for guests.

---









# KITCHEN

# KOUNTRY KRAFT



This kitchen includes a multitude of custom features such as a corner pull out, filing drawer, hidden TV, knife drawer, microwave pull out, and sink pull out.









# KITCHEN

TYLER HURST

KOUNTRY KRAFT, INC.



---

"Tyler was just great. Everything we asked for was done to perfection. Anyone we have had to our kitchen just loved it like we do. I know I had made a lot of changes, but they took them all in stride. We have the kitchen of our dream and would do it all over again with Kountry Kraft." – Customer Review

---









# KITCHEN

SHAWN PREIS

KOUNTRY KRAFT, INC.



---

Two islands are better than one. This traditional kitchen has two islands built for supreme functionality. One island is used for prepping food and the other is used for seating. Now guests can stay out of the way where food is being prepared.

---









# KITCHEN

# KOUNTRY KRAFT



*Photography by Giovanni Photographers*

This kitchen demonstrates how cabinetry can be both stylish and functional. Perimeter cabinets provide room for plenty of storage areas. The open shelves and glass doors allow the clients to display some decorative kitchen items. Unique lighting fixtures give the kitchen character.











---

"The Kountry Kraft team not only creates a beautiful furniture like product, but is on time, has wonderful customer service and does it right the first time!" - PKsurroundings

---












---

"I've been designing kitchens since 1984 and Kountry Kraft is by far the best cabinet manufacturer I have had the pleasure to work with! From the customer service right down to the job site delivery, every step of the process is top notch. With all the things that can go haywire in this business, I can always look forward to clients being completely thrilled with their Kountry Kraft cabinetry!" - Stacy Nawoj

---





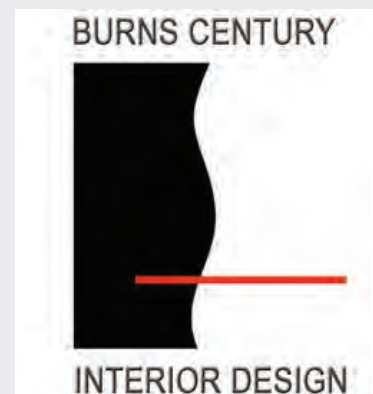


*Featured in Trends Bathroom Magazine  
"Puttin' on the Ritz" Copyright 2012 Jan  
Stittleburg, JS PhotoFX & Burns Century Interiors*





"Kountry Kraft is synonymous with quality. From their product, to their service and to their people, they are the best in the business. We are blessed to partner with Kountry Kraft for over 20 years. They have the same philosophy we do to provide the best for our clients with integrity, quality and true caring of others." - Burns Century, ASID, CKD











This open concept bathroom offers a spa like experience with marble surfaces and French inset cabinetry. Matching vanities on opposite sides of the space are enhanced with in-mirror sconces that create the illusion of infinity. Turned feet on the vanities provide an exquisite furniture like feel.











The pebble backsplash on the vanity matches the touch latch pebble drawers on the armoire cabinet. The armoire cabinet also features customized open shelving to hold extra toiletry essentials.











---

"This wet bar has been one of Stonington's favorite projects with Kountry Kraft. While the overall design was not complicated, we could not have trusted any cabinet manufacturer except Kountry Kraft to execute our design so perfectly. The quality of their dark, Mink Stain finish on the oak cabinetry is flawless, and the result is an eye-catching statement for this living room."

- Justin Sachs

---











This design was created using a mixture of ideas the client proposed. Incorporating diverse inspirations resulted in a beautiful wine room. Constructing this room into an open space makes it easy for the clients to entertain and show off their wine collection.











This customer wanted a pub feel including copper ceilings. All millwork, wainscot and door and window trim, was completed to match the cabinet selections. A drink ledge was added to the top of the wainscoting. Adding to the pub feel, a Grothouse synthesis Lyptus wood top was installed in our Gunstock stain. A brass foot rail was added to the seating area. Lighting up the stemware rack, Cinema, Norton and Guinness signs completed this pub look and feel.











---

"This homeowner wanted this area to be fun. With glass counter tops that light up and curved glass shelves to compliment the tile wall, this space makes for a fun, contemporary design." - Shawn Preis

---











*Photography by Giovanni Photographers*

The focal point of the room is this custom entertainment center for an outdoor living room. The cabinetry includes six shelves on either side of the television as well as storage areas underneath the television.











"We began working on this project when it was under construction and consisted of concrete floors, steel beams and the start of what would be a fireplace. We knew this room would soon be a lovely club room for the Residence at Portwalk Place in Portsmouth, NH. We worked through many layers of details such as all the LEED specifications that this project required. Kountry Kraft was on board with this and helped supply reconstituted veneer for the cabinetry; 2001 low VOC boxes and finish and use of regional materials. We worked with Stephanie Morrison of Morr Interiors which supplied the finishing touches of furniture, art and decorative lighting." - PKsurroundings







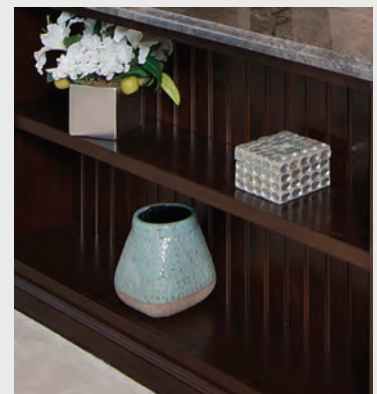
Television is cleverly hidden in the footboard.





Photography by Giovanni Photographers

A television is cleverly hidden in the custom cabinetry at the foot of the bed. By remote the television can rise when the client wants to watch their favorite shows or movies, and can be hidden when they do not. The cabinetry also includes a beadboard back, two side storage areas, and a shelf for decor.











---

The craftsmanship of Kountry Kraft is not limited to the kitchen and bath as demonstrated in this bedroom design. Kountry Kraft crafted the floating shelves, the floating nightstand, and the bathroom door.

---











This mudroom was designed with children and pets in mind. The customer wanted maximum storage for coats, bags, leashes, shoes and boots.

Kountry Kraft created maximum storage by providing 15 coat hooks, that also double as a place to hang bags and leashes.

Open space was left on the bottom as a place to leave shoes. Open shelving was left for baskets for miscellaneous items.







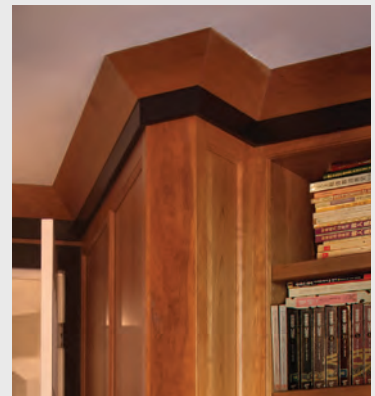




Kountry Kraft created custom crown molding to complete this elegant and timeless office space.

This customer's wish list included a space for books and files, all walls covered with wainscoting, including the trim on windows and doors.

He wanted a rich cherry warmth and feel. Although not pictured, it was also very important to the customer that a TV was included in this space so he can keep current with news and sports.











*Photography by Giovanni Photographers*

---

Custom cabinetry was crafted for this outdoor kitchen which features a grill, island seating, and refrigerator and freezer storage areas.

---











---

This custom wardrobe was crafted into a clients' dream. The closet features custom accessories that allow personal organization. The wardrobe lifts eliminate reaching for your clothing items. The shoe organizer keeps your shoes paired together and easily accessible. The cabinets are constructed out of Hard Maple and finished in a Swiss coffee paint for the appearance to come together.

---



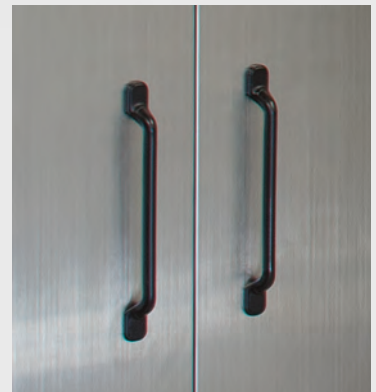








The storage units and trash cabinets are complete with Alum A Steel doors. The trash cabinet was created to house a large trash can. It includes a flip door on top for fast disposal of trash, a lift up countertop for larger items and doors to easily access the waste unit on trash day.







*Metal Fusion Hood designed by Jessica McAllister  
of D&B Elite Construction Group; Photography by April Wilson Photography*



# METAL FUSION

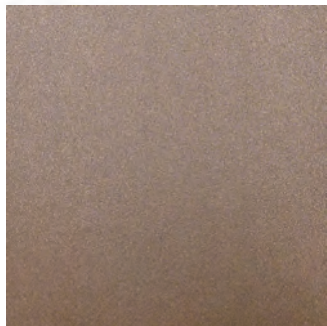
Metal Fusion by Kountry Kraft combines real pulverized metal particles with a special resin. Together they form a coating that replicates the look of metal when applied to traditional wood products. Lighter in weight and lower in price than metal, this finishing process offers affordable options for dramatic accents and focal points throughout the home. Metal Fusion is a live finish and will react to the environment, just as solid metal does, and will naturally patina over time, thus enhancing the beauty of the piece.

This metalized application is available in eight metals and three finishes. The three finishes are a Polished Finish, Polished Patina Finish, and Satin Patina Finish. Polished Finish is only available on flat surfaces. Metal Fusion can also be applied to range hoods, mouldings, corbels, appliques, legs, posts, bun fee, picture frames, and more. On products, such as corbels, posts, and decorative on-lays, a patina finish must be applied to give the appearance of tarnishing and enhance the recessed areas that cannot be polished. The eight metal types available are shown below.

BRASS



BRONZE



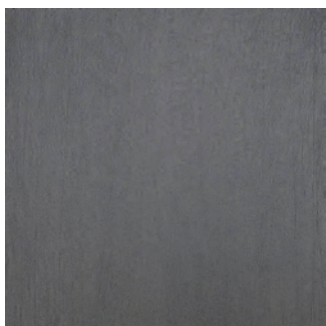
COPPER



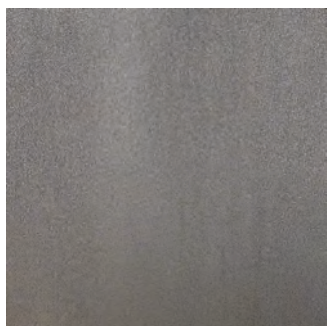
WHITE GOLD



IRON



NICKEL SILVER



OIL RUBBED BRONZE



STAINLESS STEEL









# ACCESSORIES

Custom accessories allow for optimum use of space in every nook and cranny of your home.

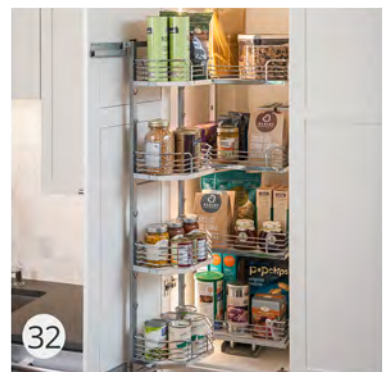
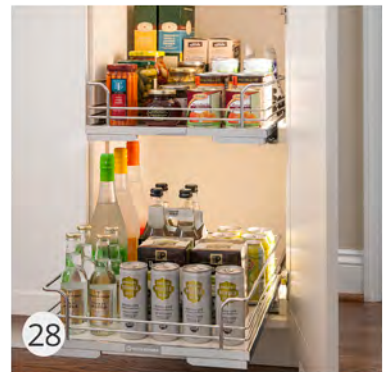


1. Soft Close Drawers 2. Drawer Shelves 3. Drawer Insert 4. Under Sink Waste Basket 5. Wardrobe Lift
6. Pullout Laundry Basket 7. Pullout Accessory Rack 8. Pullout Pants Rack 9. Shoe Rack with Guardrail
10. Wardrobe Lift 11. Pullout Valet 12. Maple, Walnut, and Cherry Dovetailed Drawers 13. Appliance Garage
14. Cabinet Pullouts 15. Dovetailed Drawer 16. Pantry Pullouts



# ACCESSORIES

Our products ensure an efficient and organized kitchen with everything placed right at your finger tips.

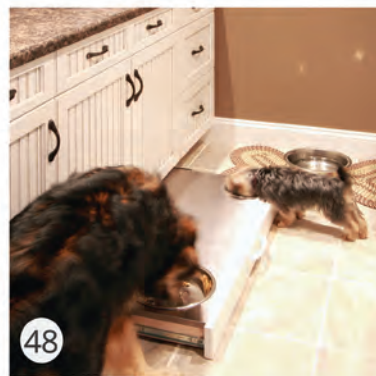
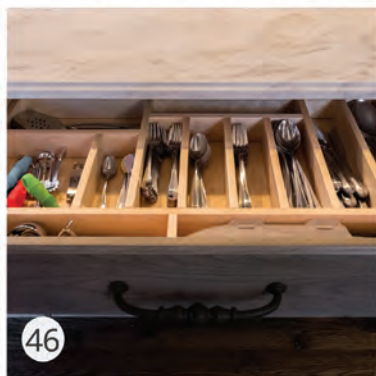


17. Spice Rack 18. Corner Pullout 19. Filler Base Pullout 20. Base Pullout Pantry 21. Under Sink Pullout 22. Pantry Pullout 23. Under Cabinet Pullout 24. Spice Rack Pullout 25. Double Waste Basket Pullout 26. Floating Pantry Pullout 27. Blind Corner Pullout 28. Rollout Trays 29. Pullout Storage Unit 30. Under Sink Storage 31. Spice Racks 32. Pantry Pullout



# ACCESSORIES

Accessories can provide innovative, space saving solutions to meet the needs of your home.



33. Lazy Susan 34. Drawer Insert 35. Filing Cabinet 36. Cabinet Storage 37. Microwave Pullout Drawer 38. Corner Pullout 39. Utensil Drawer Insert 40. Appliance Garage 41. Under Sink Pullout 42. Under Sink Caddy 43. Dry Storage Drawer 44. Hidden Column Pullouts 45. Hidden Column Pullouts 46. Drawer Inserts 47. Dinnerware Drawer 48. Pet Bowl Drawer



# QUALITY CONSTRUCTION



Kountry Kraft stands out from other cabinet manufacturers because of our commitment to quality. Our legacy of remarkable craftsmanship has managed to withstand the test of time for over half a century by adhering to our strict family values of American craftsmanship and ingenuity.

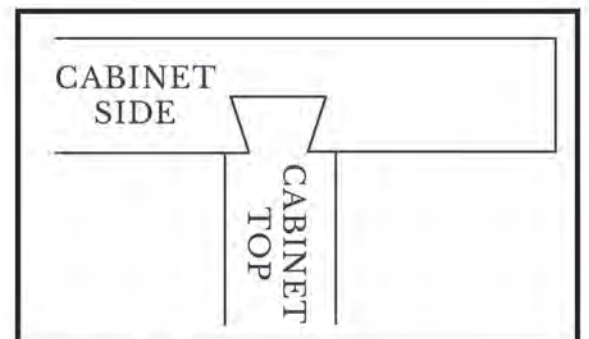
All Kountry Kraft products are custom crafted from specially selected lumber using furniture grade solid woods and veneers. From finishing and assembly to quality inspection, we ensure that every custom cabinetry project we produce is delivered on spec and on time.

Kountry Kraft is one of the few manufacturers who not only dovetail the drawer boxes, but also dovetail the cabinet boxes. Dovetailing is a finishing touch that helps to keep cabinetry strong and secure, and it is a testament to the fine craftsmanship of our products.

Dovetailing creates an extremely strong joint between two pieces of wood that can withstand heavy use. The cabinet top and bottom is dovetailed into the cabinet side, which few companies do.

Dovetailing makes a more beautiful finished product. It isn't easy and it requires a great deal of skill and experience to do it correctly, but the team of skilled craftsmen here at Kountry Kraft are able to do an excellent job.

Most cabinet manufacturers don't go through the added work and expense to dovetail, and in many cases dovetailing can be found only on cabinet drawers. To us it's an absolute requirement.



*Drawing of cabinet dovetailing*



# PRODUCT SUPPORT

## USE & CARE

Caring for your custom made cabinetry is simple, fast and requires no dangerous chemicals or treatments. Practice these basic care tips, and enjoy the look of your timeless cabinetry for years to come.

### BASIC CABINET CARE TIPS

- Wipe up spills, splatters and water spots as they occur – keep the cabinets dry.
- Clean as needed with a soft, lint free cloth. Use a mild detergent or soap and warm water.
- Dry surfaces immediately with a soft cloth.
- Avoid using a dishcloth or sponge – it could contain remnants of grease or detergents.
- Do not use products with bleach, ammonia or abrasive additives.
- Never use scouring pads, steel wool or powdered cleaners.
- Do not allow oven cleaners to come in contact with wood finishes.
- Avoid placing small kitchen appliances where heat is directed onto cabinet surfaces.
- Avoid draping damp cloths or dishtowels over cabinet doors – excessive moisture can cause permanent damage.
- Do not use waxes or polishes.

### CARING FOR WOOD AND LAMINATES

There are several important differences to note when caring for solid wood cabinetry versus laminate cabinetry. If you have recently upgraded to custom made wood cabinetry, it's especially important to note these differences, as care techniques common to laminates will damage the rich patina that solid wood provides.

- Using a low-abrasive brush or clean sponge on laminate cabinetry is a common way to remove stains.
- Never use an abrasive tool on solid wood cabinetry – even a soft brush will scratch and damage solid wood.
- Never use an abrasive cleanser such as baking soda or detergent on solid wood cabinetry.
- Plain or soapy water – provided the soapy water contains a gentle cleanser – is best.
- Removing stains from laminate cabinetry sometimes calls for all-purpose cleansers.
- Using an all-purpose cleanser on solid wood cabinetry may remove the finish and damage the wood.
- Dry the cabinets with a clean, soft cloth.
- Do not let air dry or waterspots will appear.

## LIMITED LIFETIME WARRANTY

Kountry Kraft, Inc. proudly warrants its manufactured product to be free from defects in materials and workmanship under normal home use and care for as long as the original purchaser owns the product and the product is at the original site of installation. Our obligation under this warranty shall be limited to the repair or exchange of any part or parts which may prove defective under normal home use and care during this period. This lifetime warranty is not extended to replacement of component parts. The purchaser is advised, however, that component parts manufactured by others may have their own warranties.

This limited warranty does not cover defects caused by improper storage, installation, misuse or neglect. Nor does it cover any expense involved in removing, shipping and reinstalling any items or products. This warranty applies only to defects and does not apply to the natural aging or mellowing of wood and wood finishes, nor to normal wear and tear. Kountry Kraft, Inc. reserves the option of approving field repair or returning the cabinets or component to the factory for correction.

We exclude and are not responsible for any consequential damages nor for any incidental damages arising out of this breach of any expressed, written, or implied warranty which relates to our products. Some states do not allow the exclusion or limitation of incidental or consequential damages so the above limitation or exclusion may not apply to you. We will not assume, nor authorize any person to assume for us any liability in connection with the sale of Kountry Kraft, Inc. products. This warranty is in lieu of all other warranties expressed or implied. To obtain performance under this limited lifetime warranty you must contact the authorized Kountry Kraft, Inc. Retail Dealer from whom you purchased the cabinets and report the defects claimed in writing. If the retail dealer is unavailable, then report to Kountry Kraft, Inc. directly.

In the event of dispute between parties, claims relating to this warranty can be litigated only in the Court of Common Pleas of Lebanon County, Pennsylvania.



# FEATURED DEALERS

## **BURNS CENTURY INTERIOR DESIGN**

P.O. Box 2226  
LAWRENCEVILLE, GA 30046  
(770) 277-3398  
[www.burnscentury.com](http://www.burnscentury.com)

*Featured on pages 9, 10, 47, and 48*

## **D & B ELITE CONSTRUCTION GROUP**

8 Morgan Drive  
Sinking Spring, PA 19608  
(610) 927-6494  
[www.dandbelite.com](http://www.dandbelite.com)

*Featured on pages 11, 12, and 79*

## **HANFORD CABINET & WOODWORKING**

102 Ingham Hill Road  
Old Saybrook, CT 06475  
(860) 388-5055  
[www.hanfordcabinet.com](http://www.hanfordcabinet.com)

*Featured on pages 13 and 14*

## **JAMES KERSHAW ASSOCIATES**

85 Squaw Brook Road  
North Haledon, NJ 07508  
(973) 423-1771  
[www.jameskershaw.com](http://www.jameskershaw.com)

*Featured on pages 5 and 6*

## **PETZRICK CHINN DESIGNS, LLC**

Cary, NC  
Fairfax, VA  
(571) 327-8133  
[www.kchinn.com](http://www.kchinn.com)

*Featured on pages 19 and 20*

## **PINNACLE KITCHENS**

522 NH Route 104  
P.O. Box 748  
New Hampton, NH 03256  
(603) 744-2560  
[www.pinnaclekitchens.com](http://www.pinnaclekitchens.com)

*Featured on pages 45 and 46*

## **PK SURROUNDINGS**

20 Water Street, Suite 2  
Exeter, NH 03833  
(603) 817-6347  
[www.PKsurroundings.com](http://www.PKsurroundings.com)

*Featured on pages 7, 8, 25, 26, 43, 44,  
63, 64, and on the back cover*

## **STONINGTON CABINETRY & DESIGNS**

25 Waverly Place  
Madison, NJ 07940  
(973) 845-2667  
[www.stoningtoncabinetry.com](http://www.stoningtoncabinetry.com)

*Featured on pages 3, 4, 15, 16, 29, 30, 53, and 54*

## **TR BUILDING & REMODELING**

28 Vitti Street  
New Canaan, CT 06840  
(203) 733-1540  
[www.trbuilt.com](http://www.trbuilt.com)

*Featured on pages 31 and 32*

## **TRK DESIGN COMPANY**

Nokomis, FL  
Belgrade Lakes, ME  
(617) 510-5738  
[www.ThomasRichardKelly.com](http://www.ThomasRichardKelly.com)

*Featured on pages 21 and 22*

## **TRUE NORTH CABINETS**

646 West Road  
New Canaan, CT 06840-2513  
(203) 972-3921  
[www.truenorthcabinets.net](http://www.truenorthcabinets.net)

*Featured on pages 17, 18, and on the front cover*









# KOUNTRY KRAFT

EXCELLENCE IN CUSTOM-MADE CABINETRY SINCE 1959

P.O. Box 570  
Newmanstown, PA 17073  
(610) 589-4575  
[www.kountrykraft.com](http://www.kountrykraft.com)

